

BBES Blast

Brock Bridge Elementary School 2019



405 Brock Bridge Road, Laurel, Maryland, 20724
Phone: 301-498-6280 Fax: 301-776-1028

Amy Shandrowsky, Principal
Jessica Kallon, Assistant Principal

SCHOOL YEAR 19-20

NOVEMBER/2019

Principal's Monthly Message

November brings the end of the first marking period. Report cards will be sent home on November 20th. Please remember to check grades on Parent Portal frequently.

American Education week will be the week of November 18th. Families are invited for classroom visitation on

Thursday, November 21st between the hours of 9:30-10:30 am and 2:00-3:00 pm. Please bring a valid government issued ID. We will begin signing in visitors at 9:25 am and 1:55 pm. Please refrain from bringing younger siblings.

Several parents have expressed concerns regarding our parking lot and dismissal procedures. For the safety of our students and staff, please follow the attached parking map. A few important reminders:

- * The front faculty lot may only be used for families that have handicap tags or placards.
- * Pre-k students should be picked up from the car loop.
- * The side faculty lot may not be used during dismissal as many of our students walk toward the lot in order to access the steps.
- * Please do not park on New Suddlersville Rd. Cars that are parked are preventing traffic from being able to pass through and causing significant bus delays.
- * If there is a change in plans for your student's dismissal procedure, please send it in writing. To aid in a successful dismissal, early dismissals will not be granted after 3:20 pm.

We look forward to seeing you on Family visitation day!

[A message from Ms. Ingrid Muñoz](#)

Para más información sobre este boletín de noticias, por favor llamar a Ingrid Muñoz a la escuela los martes o jueves o al celular 410.440.2538. ¡Muchas gracias!"



Administration

Amy Shandrowsky, Principal

ashandrowsky@aacps.org

Jessica Kallon, Assistant Principal

jkallon@aacps.org

Geoffrey Crocker, Counselor

(Primary, Pre-K, Kindergarten, 1st and 2nd grades)

gcrocker@aacps.org

Victoria Picciano, Counselor

(Intermediate, 3rd, 4th and 5th grades)

vpicciano@aacps.org

Office Staff

Annika Anderson, Principal Secretary

Patricia Braga, Attendance & Discipline

Tammie Mason, Registrar

Scan to follow us
on Twitter!



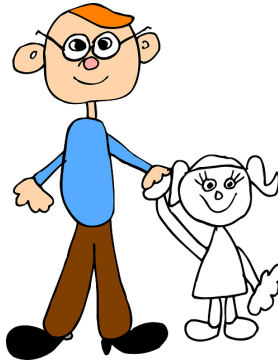
Table of Contents

Page

- 1 Principal's Message
- 2 Table of Contents
Front Office's message
- 3 Important Dates
- 4 Reminders:
Photo ID
Cupcakes/Birthday
Registration
Chaperone/Volunteer
Visiting BBES
- 5 Math Corner
Bike Riders
School Camera
- 6 NO PARKING
- 7 Healthy Habits = Healthy
Children
- 8 Parking Map



Front Office's message!



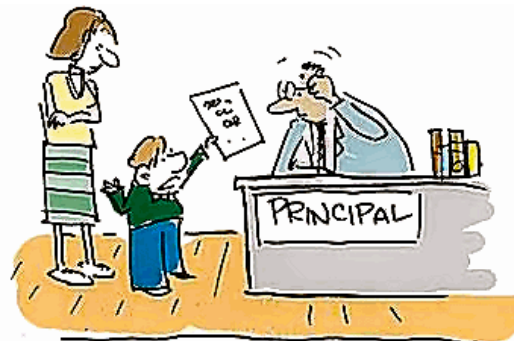
Late Arrivals

Hi families,

Brock Bridge Elementary kindly asks the parents to walk their students into the office and sign them in when they are coming in anytime after 9:15 am.

Parent's/Doctor's Note

Please make sure to have the student's FULL NAME on any note sent to school, so we can locate him/her in the system and update the information.

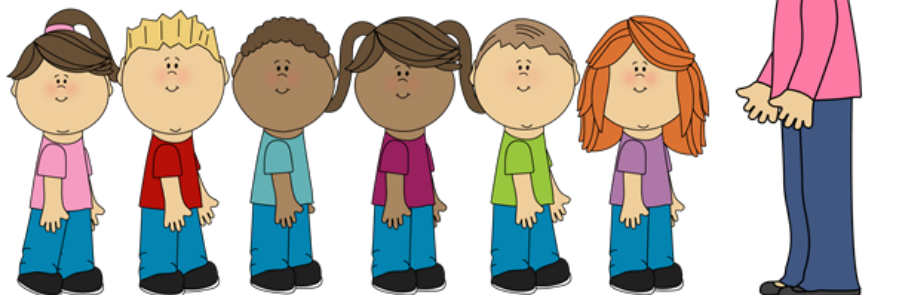


"I DO have a note from my doctor, but nobody can read it!"

Changing your child's dismissal

Families,

We kindly ask for your understanding when calling the office to change your child's dismissal on the same day. For security reasons, including your child's safety, the office is required to ask safety questions before making any changes to the dismissal plan.





IMPORTANT DATES



November 2019

Sun	Mon	Tue	Wed	Thu	Fri	Sat
					1  2nd grade Field Trip Sharp's Farm	2
3	4	5	6	7	8 End of Marking Period 2 hour Early Dismissal. School closed for p.m. PK 	9
10 	11 Beginning of 2nd Marking Period	12 Kindergarten Field Trip: Downs Park	13	14	15 5th grade drownproofing	16 AACPS Family Involvement Conference
17	18 5th grade drownproofing	19 5th grade drownproofing	20 5th grade drownproofing Report Card Distribution 1st Grade Field Trip: Aquarium	21 Classroom visitation 9:30am-10:30am 2pm-3pm	22 3rd Grade Field Trip: Sci- ence Center	23
24	25	26	27	28	29	30
<p>American Education Week →</p> <p>Thanksgiving Holiday All Schools and Central Offices Closed</p> 						

Keeping student's safe while in school



Parents **MUST** provide a **PHOTO ID** when entering the school building for the safety of all students. A photo ID must be presented when taking your child out of school for an early dismissal.

Early dismissal is any time before 3:20 PM.

Cupcakes / Birthdays



We are no longer allowing cupcakes to be brought in for birthday celebrations due to allergies and the loss of instructional time.

Please consider donating a book or pencils for the classroom.

Registration

Registrations will be held Monday-Friday from 9:30 am-3:00 pm. Please make sure you have all your paperwork at the time of registration including a transfer packet if applicable.

You can visit AACPS.org, type enrolling @ aacps in the search bar for a more detailed list of documents that are needed at the time of registration.

Reminder!

Chaperone / Volunteers

Parents are required to complete a background check before volunteering in classrooms. Please contact one of our volunteer coordinators Mr. Crocker at gcrocker@aacps.org or Mrs. White at lswhite@aacps.org for more information.



Visiting Brock Bridge Elementary School

BBES welcomes parents and guardians to visit our classrooms. We ask parents to set up a time with the teacher, at least 24 hours in advance, as to not disrupt instruction. Email addresses for teachers are listed on the school website. Visiting hours are from 9:30 a.m. -3:00 p.m. Please, no siblings. **We do require that you check in with the Front Office with your government issued photo ID. You must be on the student's Emergency Form in order to visit the school.**



School Hours:

9:15 a.m.—3:40 p.m.

Students not in class by 9:15 a.m.

Math Corner



Math fact fluency is the ability to recall the answers to basic math facts automatically and without hesitation. Fact fluency is gained through significant practice, with mastery of basic math facts being a goal of both teachers and parents. Luckily our students have access to "First In Math," a program that provides tools for students to hone their fluency skills at school, home, or anywhere with an internet connection. Teachers have access to student progress towards mastery of basic fact skills and this information can be shared with families. Students now have access codes to First in Math and should be able to log in from home. We encourage the students to practice 7-10 minutes a day to strengthen their fluency skills.

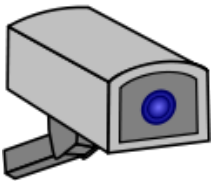
IMPORTANT NOTICE

BIKE RIDERS

- ⇒ **WALK your bike on school property and across the street at cross walks.**
- ⇒ **ALL bike riders must wear helmets.**



School Camera System



Brock Bridge Elementary School is equipped with a video camera system. It covers selected interior and exterior public portions of the building and grounds. It is NOT monitored constantly, but it is monitored during emergency situations.

During certain events, when the safety or security of students may be in questions, authorized personnel from local, state, or federal police or fire emergency units may be given access to view images projected on the camera system. If you have any questions about the system, you should call the Supervisor of School Security at 410-222-5083.



No Parking at Fire Lanes and Bus Loops

Parking in designated **fire lanes** and/or **bus loops** is prohibited. This prohibition extends to staff, students, visitors, spectators at athletic events, day care vans, and after school activity vans such as karate centers, clubs, etc. Any vehicle parked in a fire lane or obstructing a fire hydrant must be moved to an authorized parking space.

Maryland Motor Vehicle Law §21-101.1(b)2,3 states:

A person may not drive a motor vehicle in violation of any provision of this title on any property that is owned by or under the control of this State or any of its political subdivisions, county boards of education, or community colleges and that is open to vehicular traffic and used by the public in general. Any person who violates any provision of this subsection is in violation of the law to the same extent and is subject to the same penalty as if the motor vehicle were driven on a highway.

Healthy Habits = Healthy Children



Healthy Habits Decrease the Spread of Germs & Help Keep Children and Families Well

1. **Handwashing** is one of the best ways to keep from getting sick. If soap & water aren't available, use an alcohol based hand sanitizer.
2. **Cover that sneeze and cough**—Coughing and sneezing spread germs. Cover your nose and mouth with a tissue or the inside of your elbow to prevent spreading germs to your hands.
3. **Get Moving**—Exercise helps the body fight off simple illness. Include active play in your child's schedule.
4. **Sleep**—Getting the right amount of sleep will help fight off colds and infections.
5. **Healthy Eating**—Good nutrition is Vital for good health. Provide a variety of foods, including plenty of vegetables, fruits and whole grains at meal and snack times.
6. **Keep Your Child Home When Sick**—Children should stay home until they feel better!

When Do I Keep My Child Home From School?

(Although no comprehensive list is possible, the following conditions may be appropriate reasons to keep a student home or seek medical advice)



Temperature 100 degree or greater

Suspected Fracture

Vomiting, Diarrhea

Severe pain

Shortness of breath, Wheezing

Undiagnosed rash

Abdominal Pain

Productive Cough/Fever

Red, draining eyes

Chest pain

Suspected communicable disease

Head injury

Earache

Adverse medication reaction

Nuisance conditions undergoing treatment e.g., ringworm, scabies, head lice etc.

Student drop
off and pick
up

ONLY



No parking
NO parking
NO parking

BUSES ONLY



Teacher and Handicap
ONLY

Buses only



Teachers

Parking ONLY

STAFF ONLY

BACKSCHOOL ELEMENTARY

Unit #2015

Unit #2182

Unit #2181

Unit #2180

SLAM

